


LOC I-PNE 111.1	APP CRS 240°	Rwy Idg 7000	TDZE 116
		Apt Elev 121	

ILS or LOC RWY 24
NORTHEAST PHILADELPHIA (PNE)

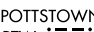
⚠ When local altimeter setting not received, use Philadelphia Intl altimeter setting and increase all DA/MDA 60 feet and S-LOC 24 Cat C visibility ¼ mile. For inoperative MALSR when using Philadelphia Intl altimeter setting, increase S-ILS 24 all Cats visibility to 1.

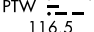
MALSR


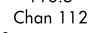
MISSED APPROACH:
Climb to 800, then climbing right turn to 3000 direct ARD VOR/DME and hold.

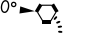
ATIS 121.15	PHILADELPHIA APP CON 123.8 291.7	NORTHEAST PHILADELPHIA TOWER * 126.9 (CTAF) 0 278.8	GND CON 121.7	CLNC DEL 127.25	UNICOM 122.95
-----------------------	--	---	-------------------------	---------------------------	-------------------------

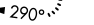
ALTERNATE MISSED APCH FIX
POTTSTOWN
PTW
116.5
Chan 112

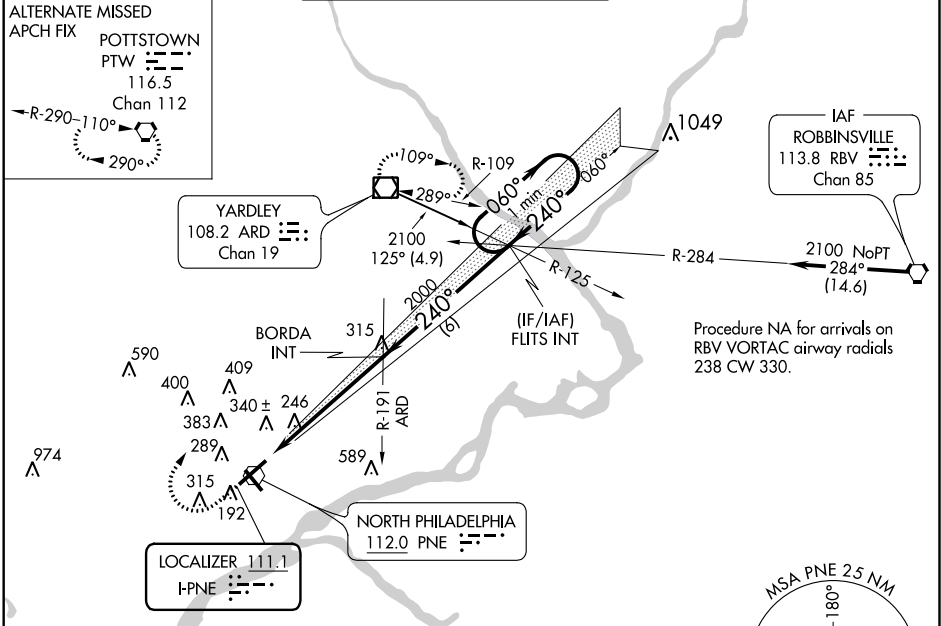




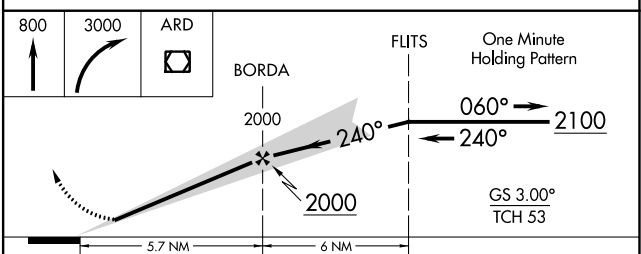
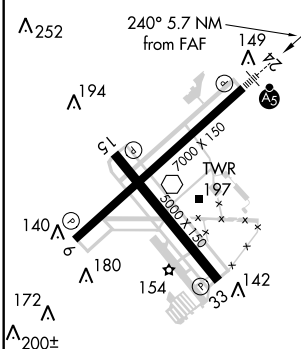








ELEV 121	TDZE 116
----------	----------



FAF to MAP 5.7 NM	Knots				
	60	90	120	150	180
Min:Sec	5:42	3:48	2:51	2:17	1:54

CATEGORY	A	B	C	D
S-ILS 24	316-½ 200 (200-½)			
S-LOC 24	560-½	444 (500-½)	560-¾ 444 (500-¾)	560-1 444 (500-1)
CIRCLING	640-1	519 (600-1)	640-1½ 519 (600-1½)	700-2 579 (600-2)

NE-4, 04 JAN 2018 to 01 FEB 2018

NE-4, 04 JAN 2018 to 01 FEB 2018

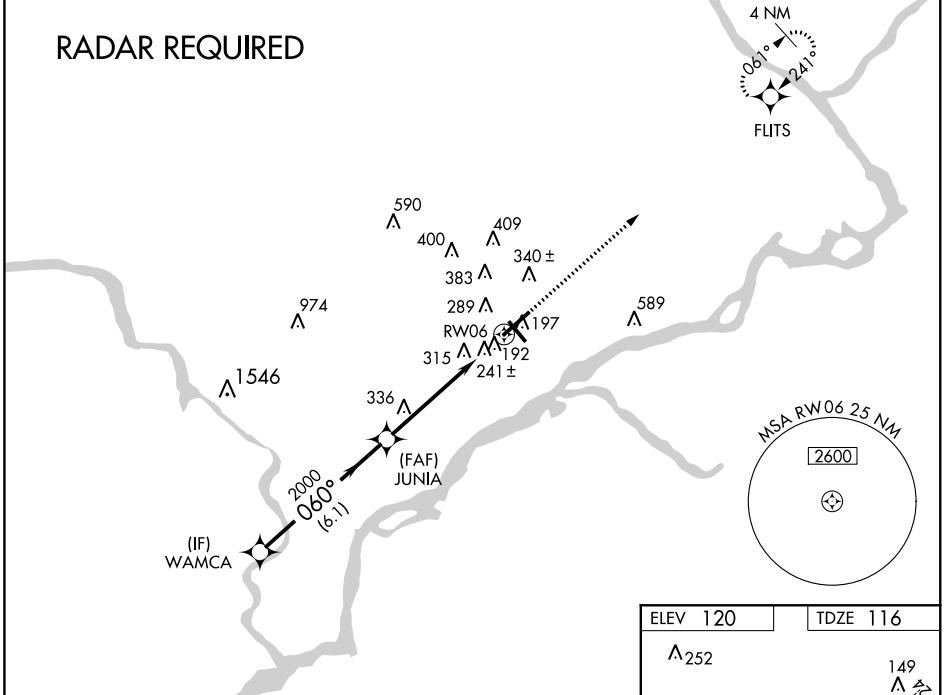
WAAS CH 65622 W06A	APP CRS 060°	Rwy Idg TDZE Apt Elev	7000 116 120
--	------------------------	-----------------------------	---

RNAV (GPS) RWY 6

NORTHEAST PHILADELPHIA (PNE)

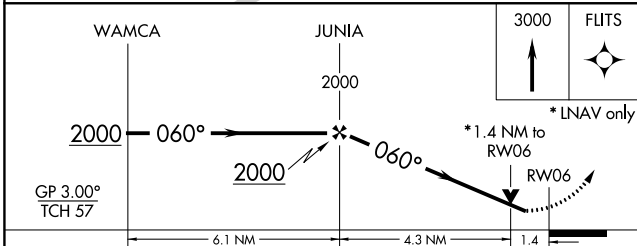
<p>⚠ For uncompensated Baro-VNAV systems, LNAV/VNAV NA below -15°C (5°F) or above 48°C (118°F). DME/DME RNP-0.3 NA. When local altimeter setting not received, use Philadelphia Intl altimeter setting and increase all DA 50 feet and all MDA 60 feet; increase LPV all Cats, LNAV/VNAV all Cats, and LNAV Cat C/D visibility ¼ mile. Helicopter visibility reduction below ¾ SM NA. VDP and Baro-VNAV NA when using Philadelphia Intl altimeter setting.</p>				<p>MISSED APPROACH: Climb to 3000 direct FLITS and hold.</p>	
ATIS 121.15	PHILADELPHIA APP CON 123.8 291.7	NORTHEAST PHILADELPHIA TOWER * 126.9 (CTAF) 0 278.8	GND CON 121.7	CLNC DEL 127.25	UNICOM 122.95

RADAR REQUIRED

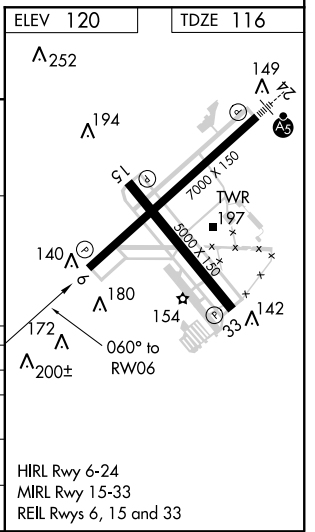


NE-4, 04 JAN 2018 to 01 FEB 2018

NE-4, 04 JAN 2018 to 01 FEB 2018



CATEGORY	A		B		C		D	
LPV DA	490-1¼ 374 (400-1¼)							
LNAV/VNAV DA	540-1½ 424 (500-1½)							
LNAV MDA	600-1	484 (500-1)	600-1¼	484 (500-1¼)	600-1½	484 (500-1½)	600-1½	484 (500-1½)
CIRCLING	700-1	580 (600-1)	700-1½	580 (600-1½)	700-2	580 (600-2)	700-2	580 (600-2)



HIRL Rwy 6-24
MIRL Rwy 15-33
REIL Rwy 6, 15 and 33

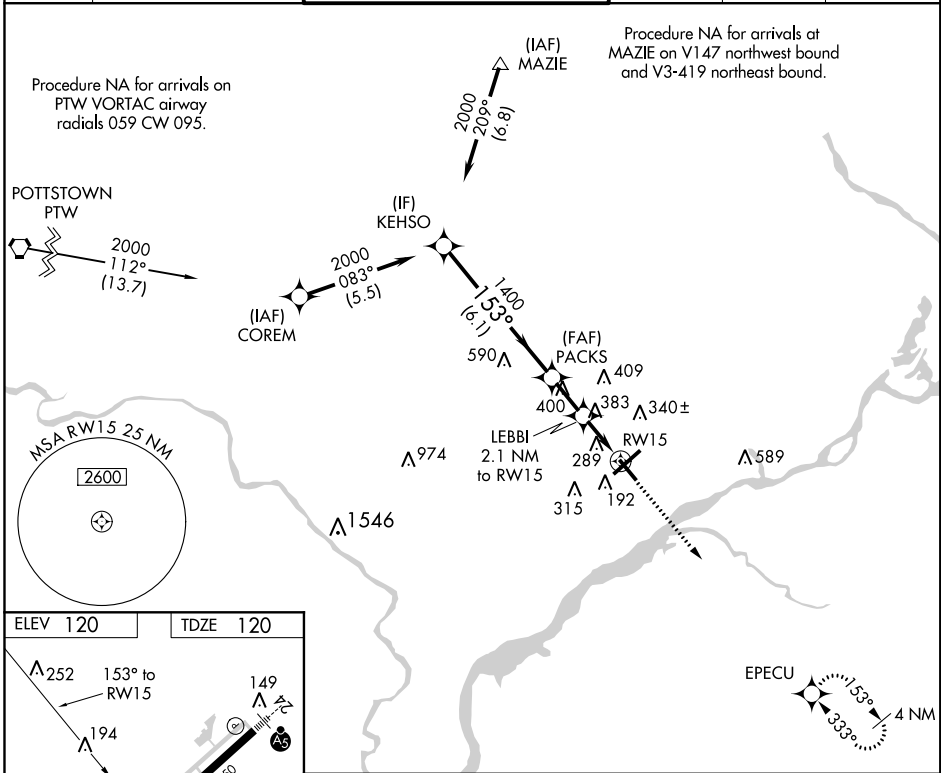
APP CRS	Rwy Idg	5000
153°	TDZE	120
	Apt Elev	120

RNAV (GPS) RWY 15

NORtheast PHILADELPHIA (PNE)

<p>⚠ When local altimeter setting not received, use Philadelphia Intl altimeter setting and increase all MDA 60 feet. Increase LNAV Cat C/D and Circling Cat C visibility ¼ mile. DME/DME RNP-0.3 NA.</p>	<p>MISSED APPROACH: Climb to 2000 direct EPECU and hold.</p>
--	--

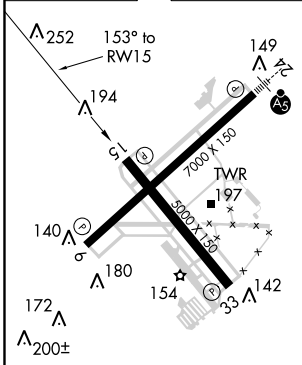
<p>ATIS 121.15</p>	<p>PHILADELPHIA APP CON 123.8 291.7</p>	<p>NORtheast PHILADELPHIA TOWER * 126.9 (CTAF) 0 278.8</p>	<p>GND CON 121.7</p>	<p>CLNC DEL 127.25</p>	<p>UNICOM 122.95</p>
-------------------------------	--	---	---------------------------------	-----------------------------------	---------------------------------



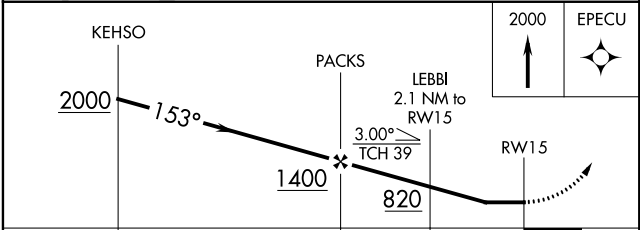
NE-4, 04 JAN 2018 to 01 FEB 2018

NE-4, 04 JAN 2018 to 01 FEB 2018

ELEV 120	TDZE 120
----------	----------



HIRL Rwy 6-24
 MIRL Rwy 15-33
 REL Rwy 6, 15 and 33



CATEGORY	A	B	C	D
LNAV MDA	660-1	540 (600-1)	660-1½	540 (600-1½)
CIRCLING	660-1	540 (600-1)	660-1½	680-2
			540 (600-1½)	560 (600-2)

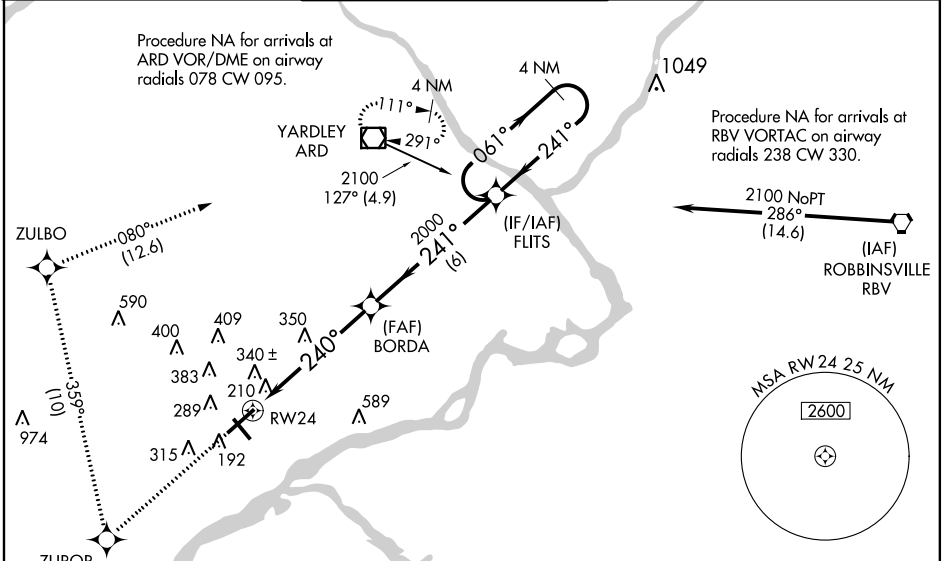
WAAS Ch 45504 W24A	APP CRS 240°	Rwy ldg TDZE Apt Elev	7000 116 121
--	------------------------	-----------------------------	---

RNAV (GPS) RWY 24

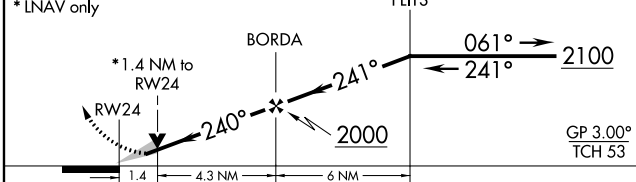
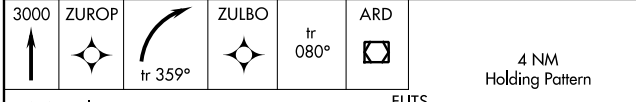
NORtheast PHILADELPHIA (PNE)

<p>⚠ When local altimeter setting not received, use Philadelphia Intl altimeter setting and increase all DA/MDA 60 feet and LPV all Cats, LNAV/VNAV all Cats, and LNAV Cats C/D visibility ¼ mile. VDP and Baro-VNAV NA when using Philadelphia Intl altimeter setting. For uncompensated Baro-VNAV systems, LNAV/VNAV NA below -15°C (5°F) or above 48°C (118°F). DME/DME RNP-0.3 NA. For inoperative MALSR when using Philadelphia Intl altimeter setting, increase LPV all Cats visibility to 1½. For inoperative MALSR, increase LPV visibility all Cats to 1.</p>	<p>MALSRL</p>	<p>MISSED APPROACH: Climb to 3000 direct ZUROP, and right turn via 359° track to ZULBO and via 080° track to ARD VOR/DME and hold.</p>
---	----------------------	---

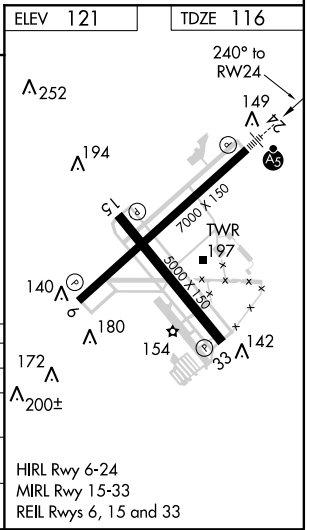
ATIS 121.15	PHILADELPHIA APP CON 123.8 291.7	NORtheast PHILADELPHIA TOWER * 126.9 (CTAF) 0 278.8	GND CON 121.7	CLNC DEL 127.25	UNICOM 122.95
------------------------------	---	--	--------------------------------	----------------------------------	--------------------------------



ELEV 121	TDZE 116
-----------------	-----------------



CATEGORY	A	B	C	D
LPV DA	430-½ 314 (400-½)			
LNAV/VNAV DA	620-1¼ 504 (500-1½)			
LNAV MDA	600-½ 484 (500-½)	600-¾ 484 (500-¾)		600-1 484 (500-1)
CIRCLING	640-1 519 (600-1)	640-1½ 519 (600-1½)		700-2 579 (600-2)



NE-4, 04 JAN 2018 to 01 FEB 2018

NE-4, 04 JAN 2018 to 01 FEB 2018

WAAS CH 69327 W33A	APP CRS 333°	Rwy Idg TDZE Apt Elev	5000 108 120
--	------------------------	-----------------------------	---

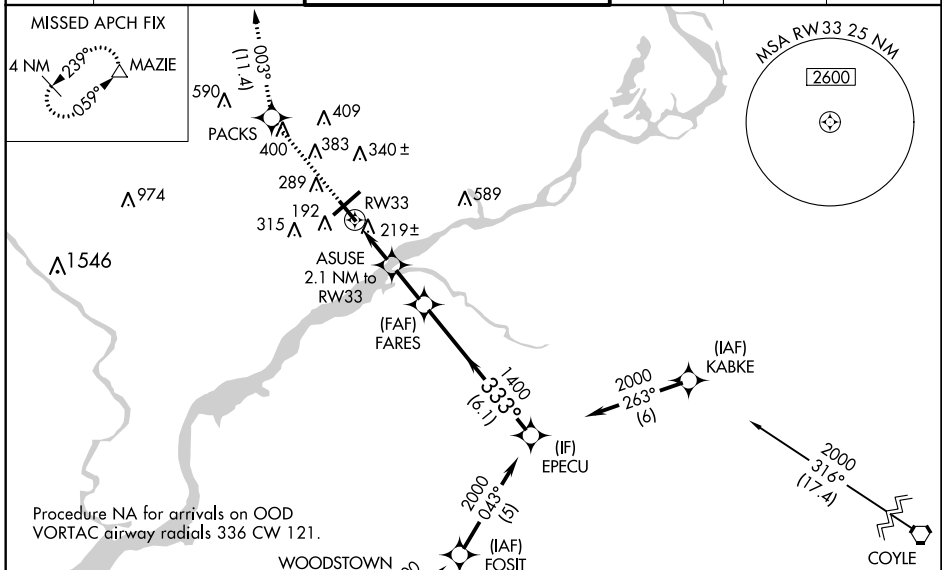
RNAV (GPS) RWY 33

NORTHEAST PHILADELPHIA (PNE)

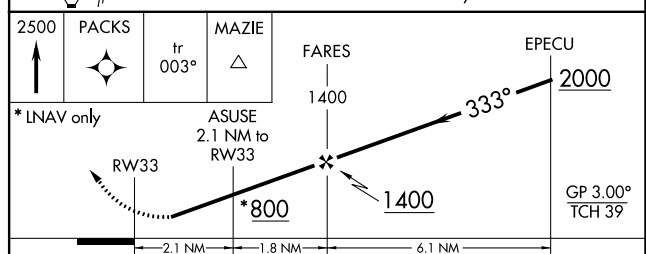
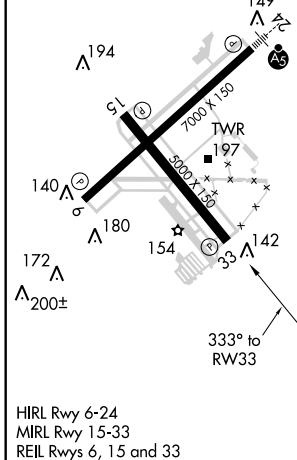
⚠ Baro-VNAV NA when using Philadelphia Intl altimeter setting. For uncompensated Baro-VNAV systems, LNAV/VNAV NA below -1.5°C (5°F) or above 43°C (109°F). When local altimeter setting not received, use Philadelphia Intl altimeter setting and increase all DA 50 feet and all MDA 60 feet. Increase LPV and LNAV/VNAV visibility all Cats ½ mile and LNAV Cats C/D visibility ¼ mile. DME/DME RNP-0.3 NA.

MISSED APPROACH:
Climb to 2500 direct PACKS and on track 003° to MAZIE and hold.

ATIS 121.15	PHILADELPHIA APP CON 123.8 291.7	NORTHEAST PHILADELPHIA TOWER * 126.9 (CTAF) 0 278.8	GND CON 121.7	CLNC DEL 127.25	UNICOM 122.95
-----------------------	--	---	-------------------------	---------------------------	-------------------------



ELEV 120	TDZE 108
----------	----------



CATEGORY	A	B	C	D
LPV DA		380-1	272 (300-1)	
LNAV/VNAV DA		400-1	292 (300-1)	
LNAV MDA		480-1	372 (400-1)	
CIRCLING	640-1	520 (600-1)	640-1½ 520 (600-1½)	680-2 560 (600-2)

NE-4, 04 JAN 2018 to 01 FEB 2018

NE-4, 04 JAN 2018 to 01 FEB 2018

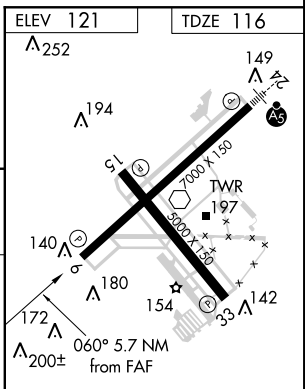
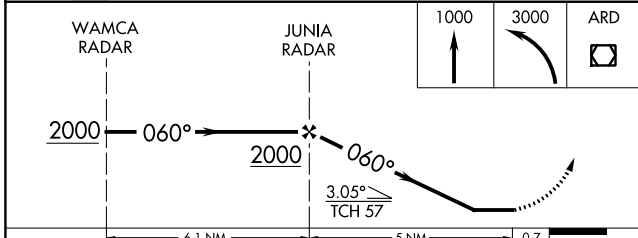
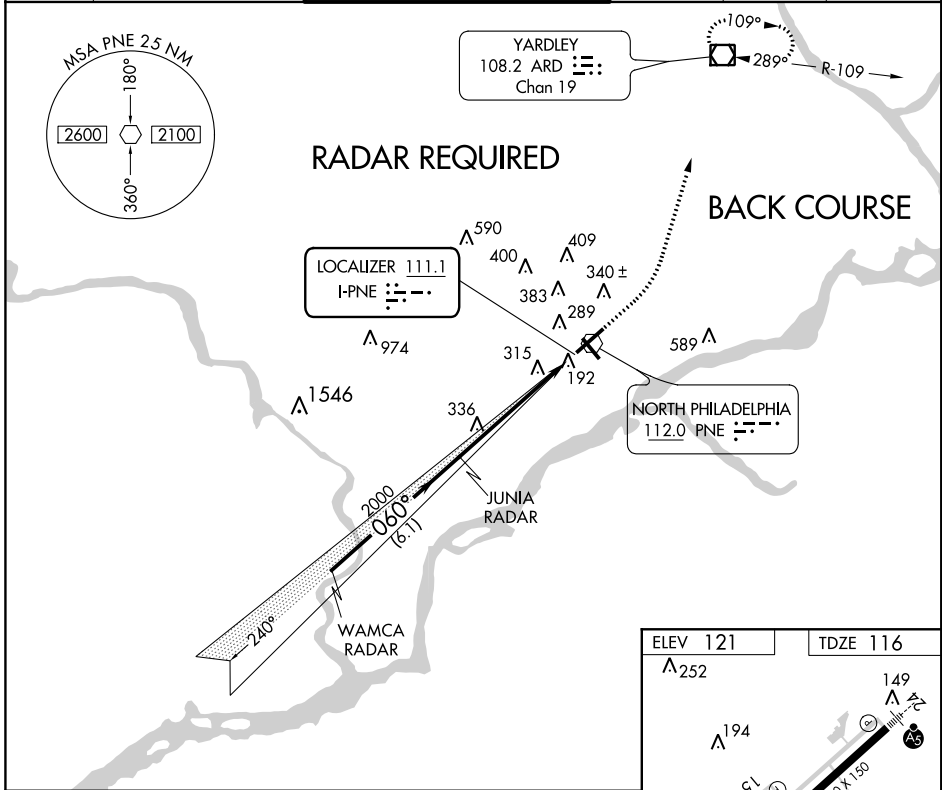
LOC I-PNE 111.1	APP CRS 060°	Rwy Idg TDZE Apt Elev	7000 116 121
---------------------------	------------------------	-----------------------------	---

LOC BC RWY 6

NORTHEAST PHILADELPHIA (P'NE)

<p>When local altimeter setting not received, use Philadelphia Intl altimeter setting and increase all MDA 60 feet and S-6 Cats C/D visibility ¼ mile. Radar Required.</p>	MISSED APPROACH: Climb to 1000, then climbing left turn to 3000 direct ARD VOR/DME and hold.	
	ATIS 121.15	PHILADELPHIA APP CON 123.8 291.7

GND CON 121.7	CLNC DEL 127.25	UNICOM 122.95
-------------------------	---------------------------	-------------------------



CATEGORY	A	B	C	D
S-6	600-1 484 (500-1)		600-1½ 484 (500-1¼)	600-1½ 484 (500-1½)
CIRCLING	640-1 519 (600-1)		640-1½ 519 (600-1½)	700-2 579 (600-2)

ELEV 121	TDZE 116
HIRL Rwy 6-24 MIRL Rwy 15-33 REIL Rws 6, 15 and 33	FAF to MAP 5 NM
Knots	60 90 120 150 180
Min:Sec	5:00 3:20 2:30 2:00 1:40

NE-4, 04 JAN 2018 to 01 FEB 2018

NE-4, 04 JAN 2018 to 01 FEB 2018

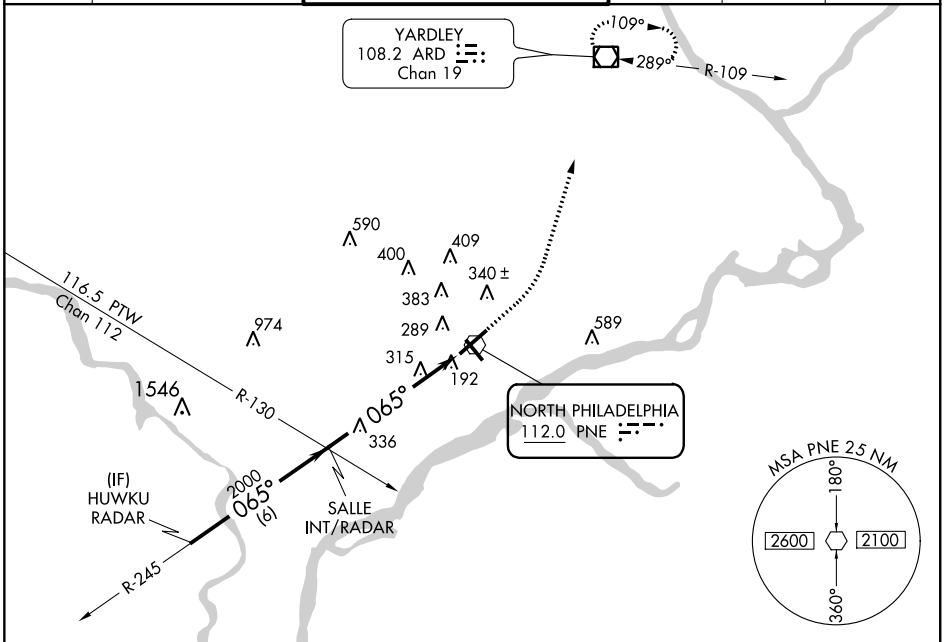
VOR PNE 112.0	APP CRS 065°	Rwy Idg TDZE Apt Elev	7000 111 121
-------------------------	------------------------	-----------------------------	---

VOR RWY 6
NORTHEAST PHILADELPHIA (PNE)

⚠ When local altimeter setting not received, use Philadelphia Intl altimeter setting and increase all MDA 60 feet and S-6 Cats. C/D visibility ¼ mile.

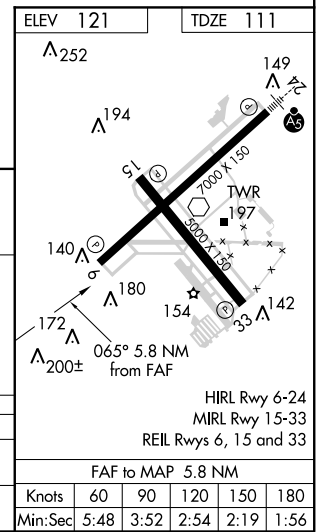
⚠ MISSED APPROACH: Climb to 1000 then climbing left turn to 3000 direct ARD VOR/DME and hold.

ATIS 121.15	PHILADELPHIA APP CON 123.8 291.7	NORTHEAST PHILADELPHIA TOWER * 126.9 (CTAF) 278.8	GND CON 121.7	CLNC DEL 127.25	UNICOM 122.95
-----------------------	--	---	-------------------------	---------------------------	-------------------------



NE-4, 04 JAN 2018 to 01 FEB 2018

NE-4, 04 JAN 2018 to 01 FEB 2018



	HUWKU RADAR	SARLE INT/RADAR	1000	3000	ARD
	2000	2000	↑	↶	☐
	065°		PNE VOR		
	6 NM		5.8 NM		

CATEGORY	A	B	C	D
S-6	600-1 484 (500-1)		600-1¼ 484 (500-1¼)	600-1½ 484 (500-1½)
CIRCLING	640-1 519 (600-1)		640-1½ 519 (600-1½)	700-2 579 (600-2)

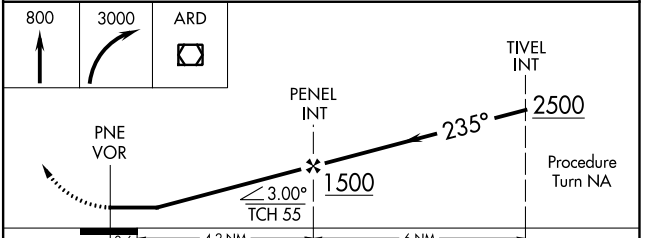
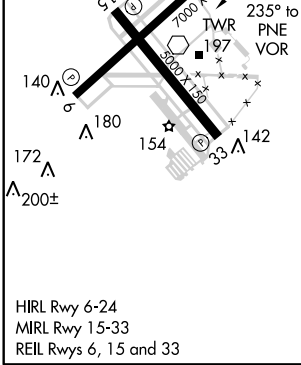
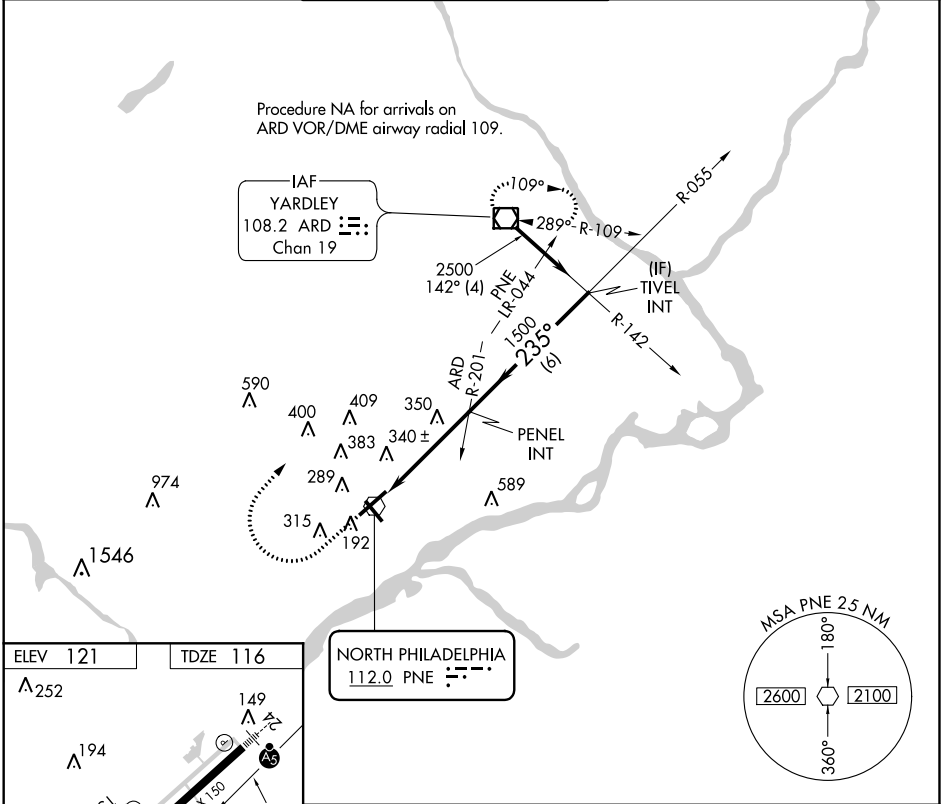
VOR PNE 112.0	APP CRS 235°	Rwy Idg TDZE Apt Elev	7000 116 121
-------------------------	------------------------	-----------------------------	---

VOR RWY 24

NORtheast PHILADELPHIA (PNE)

<p>▼ When local altimeter setting not received, use Philadelphia Intl altimeter setting and increase all MDA 60 feet and S-24 Cats. C/D visibility ¼ mile.</p>	<p>MALSR </p>	<p>MISSED APPROACH: Climb to 800, then climbing right turn to 3000 direct ARD VOR/DME and hold.</p>
---	-------------------	---

ATIS 121.15	PHILADELPHIA APP CON 123.8 291.7	NORtheast PHILADELPHIA TOWER ★ 126.9 (CTAF) 0 278.8	GND CON 121.7	CLNC DEL 127.25	UNICOM 122.95
-----------------------	--	---	-------------------------	---------------------------	-------------------------



CATEGORY	A	B	C	D
S-24	600-½ 484 (500-½)	600-¾ 484 (500-¾)	600-1 484 (500-1)	600-1 484 (500-1)
CIRCLING	640-1 519 (600-1)	640-1½ 519 (600-1½)	700-2 579 (600-2)	700-2 579 (600-2)

NE-4, 04 JAN 2018 to 01 FEB 2018

NE-4, 04 JAN 2018 to 01 FEB 2018